

MLS #: L88539C (Closed) List Price: \$195,000

131 E Mezquite South Padre Island, TX 78597

Sold Date: 5/15/2018



Acreage: Less than 1 Acre
Topography: Level

Street Name - Other:
County: Cameron
Town: South Padre Island
Subdivision: Padre Beach Sec VII
School District: PIISD
Zoning: B2

Lot #: 17A/B	Block #: 92	Unit/Parcel:
Subdivision-Other:		
Lot Size/Acreage: 50 x 125	Lot Size/Acreage Source: CCAD	
Location Desc: Gulf Interior, Partial Gulf View		ETJ:
HOA: No	Fee Amount: 0	Fee Payable: NA
Taxes: 2559.00	Tax Year: 2017	HOA Includes:
Tax ID #: PADRE BEACH SUBDIVISION VII BL		
Access:		
Irrigation Water Rights:	Irrigation Fee:	Irrigation District: No
Irrigation Provider:	Potable Water: No	Water Supplier: LMWD
Water Comments:		
Improvements:		
Utilities:		
Subdivision Amenities: None		
Miscellaneous:		

Public Remarks: Get ready to build your dream home, less than 200 yards from the beach! Second lot from Gulf Blvd. and just steps away from a public beach access, you could walk to the beach in minutes! The lot is currently platted for two townhomes, each 25' wide - could be replatted back into one 50' wide lot. 125' depth leaves plenty of room for a pool in the back. Don't let this opportunity get away!

Information Herein Deemed Reliable but Not Guaranteed
MLS #: L88539C

street view



street view



street view



street view



street view



aerial view



approx. 200yds to the beach!

street view



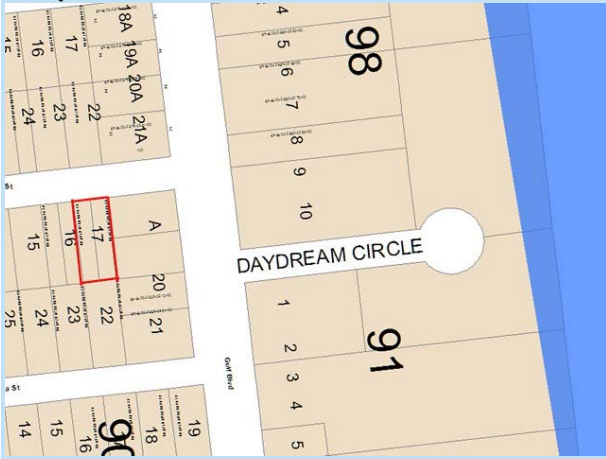
approx. 200yds to the beach!

beach access



just steps away from public beach access

map view



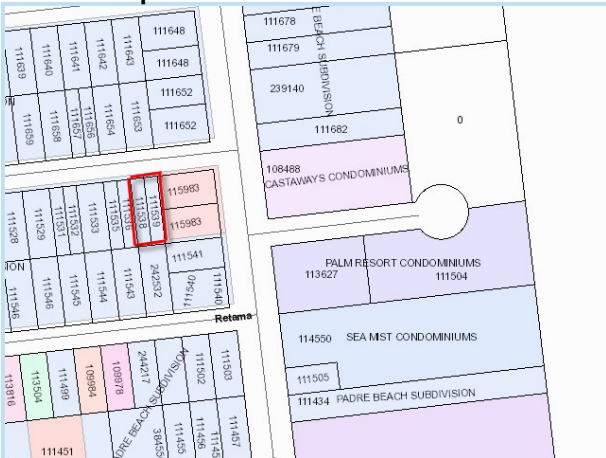
2nd lot from Gulf Blvd.

map view



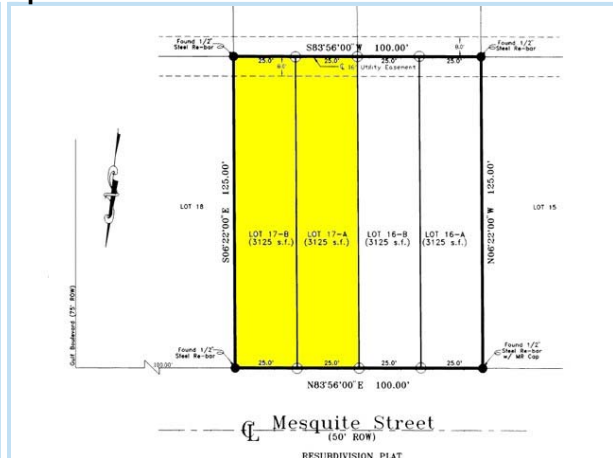
2nd lot from Gulf Blvd.

CCAD map view



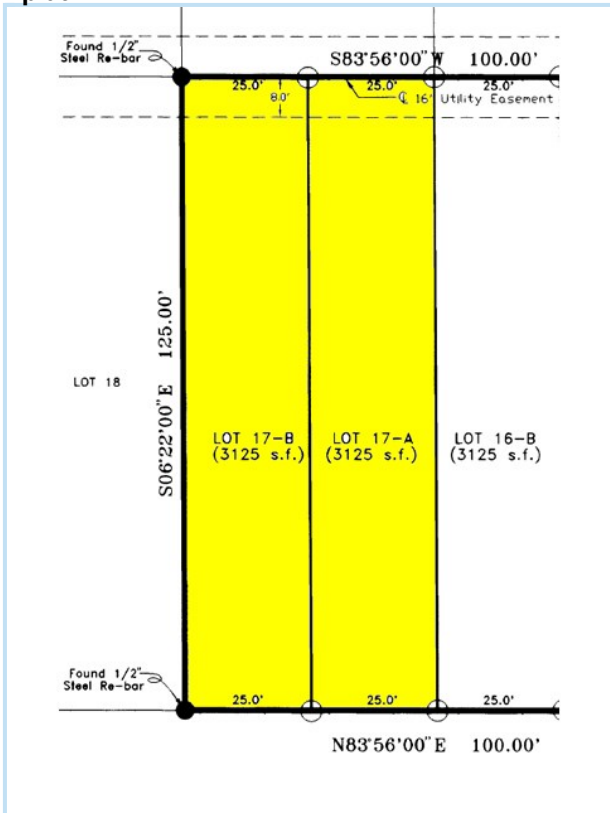
2nd lot from Gulf Blvd.

plat



platted as two 25' x 125' townhome lots

plat



platted as two 25' x 125' townhome lots