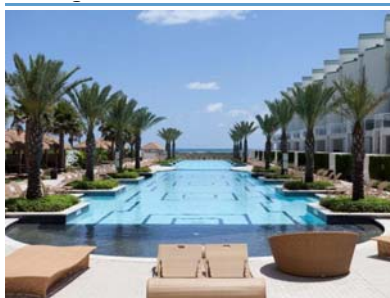


MLS #: N88317C (Closed) List Price: \$524,900

310A Padre Blvd. South Padre Island, TX 78597

Sold Date: 12/20/2017



Type: Condominium
Stories: One
Ground Floor: No
Ttl Bldg Units: 230
Ttl Bldg Floors: 31
Rooms: Open Concept, Utility Room
Bedrooms: 3
Full Baths: 2
Half Baths: 1
Est A/C SqFt: 1748
Year Built: 2006
Bedroom Location:

Unit #: 1801
Street Name - Other:
Complex Name: Sapphire
County: Cameron
Town: South Padre Island
Subdivision: Other
School District: PIISD
Zoning: Res

Lot #: n/a Block #: n/a Unit/Parcel:

Complex Name-Other:

Subdivision-Other:

Lot Size/Acreage: n/a Apx Acreage Range: Less than 1 Acre

Lot Size/Acreage Source: Location Description: Bay View, Gulf Front, Gulf View

Fee Amount: 860 Fee Payable: M HOA Includes: water, cable, trash, insurance

Insurance Amount: 0.00 Insr Incl/Fee: Yes

Rental Unit: No Rental Agy Phone #: NA Current Long Term Lease: No

Taxes: 9086.00 Tax Year: 2017 Tax ID #: 67-6826-0000-1801-00

Irrigation Fee: 0 Irrigation Provider: Potable Water: Water Provider:

Interior Features: Ceiling Fan(s), Furnished, Jacuzzi/Whirlpool Type, Smoke Detector, Walk-in Closet, Washer/Dryer Hook-up, Window Treatment

Exterior Features: Balcony, Hot Tub, Pool, Storage, Water Front, Water View

Community/Club Amenities: Exercise Room/Gym, Front Desk, Hot Tub, Pool-Indoor, Pool-Outdoor, Security-24 Hour, Water View

Miscellaneous: Association-HOA

Construction:

Foundation:

Roof:

Cooling/Heating: Central Electric

Energy Features: Programmable Thermostat

Utilities: Cable TV, Electricity, High Speed Internet, Telephone, Water District

Flooring: Tile

Car Covering: Enclosed Parking

Appliances: Cook-Top, Dishwasher, Disposal, Microwave, Oven-Single, Refrigerator, Stove, Washer/Dryer, Wine Refrigeration

Public Remarks: This north corner 18th floor condo offers stunning vistas of the Gulf of Mexico, Laguna Madre Bay & all of SPI. Open concept living/ dining area provide sweeping ocean views. Kitchen features granite counters & stainless steel appliances. The master suite has a private balcony, water view, ensuite bath w/ jetted tub, separate tiled shower, 2 sinks, & closet with built-in shelving. There are 2 additional bedrooms, guest bath, & half bath. This Emerald Bay floorplan has been modified to include a more spacious kitchen, & enlarged master suite w/ direct balcony access. Convenient in-unit washer/dryer. Established rental history. Sapphire amenities include spa, gym, gameroom, theatre, 24-hr front desk & the largest pool on SPI.

Information Herein Deemed Reliable but Not Guaranteed

MLS #: N88317C

88317A



living
gorgeous ocean view from living area



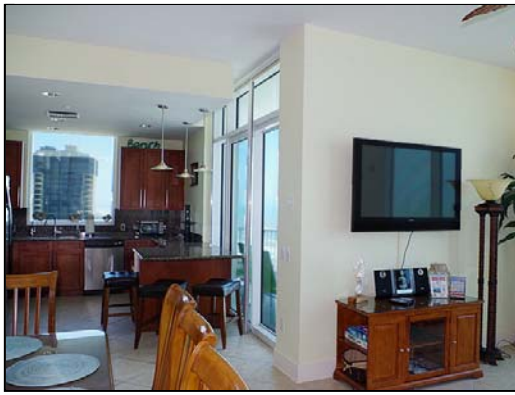
living
emerald bay floorplan has large living area



living
plenty of room for relaxing



dining
dining space for 6 guests



living/kitchen
open concept



dining
very spacious dining area



kitchen
granite counters, stainless steel appliances



kitchen
ocean view from the kitchen



kitchen
extra seating for more guests



east balcony
spacious north corner east balcony



west balcony
spacious north corner west balcony



east view
view of pool from balcony



east view
stunning panoramic views from balcony



east view
stunning panoramic views from balcony



master bedroom
tastefully decorated master bedroom



master bedroom
view of the bridge from master bedroom



master bedroom
wake up to this view!



master bedroom
master bedroom has west balcony access



west view
view from west balcony



west view
view from west balcony



master bath
double sing in master bath



master bath
master bath has jetted tub and separate shower



master closet
custom shelving in master closet



guest bedroom 1
guest bedroom 1 has ensuite bath



guest bedroom 1
guest bedroom 1 has cute beachy decor



guest bath
guest bath with custom tiled shower



guest bath
guest bath has spacious countertop



guest bedroom 1
guest bedroom 2 has awesome north view



entry
welcoming entry hall



utility
convenient in-unit washer/dryer



floorplan
emerald bay floorplan has 3 bedrooms, 2.5 baths, connects east to west



pool
Sapphire has the largest pool on SPI



pool
Sapphire has the largest pool on SPI



pool
Sapphire has the largest pool on SPI



business ctr
Sapphire business center



gym
Sapphire gym



lobby
Sapphire lobby



gameroom
Sapphire gameroom



theatre
Sapphire theatre



aerial
aerial view of SPI's tallest condominium



#1801 is on the north corner



tower
night view