

MLS #: L89044C (Closed) List Price: \$168,500

106/108 W Cora Lee Dr. South Padre Island, TX 78597

Sold Date: 3/29/2018



Acreage: Less than 1 Acre
Topography: Level

Street Name - Other:
County: Cameron
Town: South Padre Island
Subdivision: Padre Beach Sec XI
School District: PIISD
Zoning: NTZ

Lot #: 1&2	Block #: 175	Unit/Parcel:
Subdivision-Other:		
Lot Size/Acreage: 100 x 125	Lot Size/Acreage Source: CCAD	
Location Desc: Bay Interior , Interior Lot, Laguna Blvd Frontage, Other-See Remarks		
		ETJ:
HOA: No	Fee Amount: NA	Fee Payable: NA
HOA Includes:		
Taxes: 3869.00	Tax Year: 2017	Tax ID #: 67-6400-1750-0010-00
Access: Road-Paved		
Irrigation Water Rights:	Irrigation Fee:	Irrigation District: No
Irrigation Provider:	Potable Water: Yes	Water Supplier: LMWD
Water Comments:		
Improvements:		
Utilities:		
Subdivision Amenities: None		
Miscellaneous: Other-See Remarks		

Public Remarks: Two adjacent corner lots in the Neighborhood Transition Zone! NTZ offers flexibility for a variety of uses. Build a single family home/townhome/condo, and enjoy the tranquility of the bay side of the island. This location is surrounded by residential properties, and is only a block from the Laguna Madre Bay, making it a great spot for water sport enthusiasts. Other permitted uses include business office, art gallery, childcare facility, park or playground, just to name a few. 100 on W Cora Lee x 125 on Laguna Blvd. 102-104 W Cora Lee are also for sale. Plenty of space - Plenty of possibilities!!

Information Herein Deemed Reliable but Not Guaranteed
 MLS #: L89044C

LL89044AA

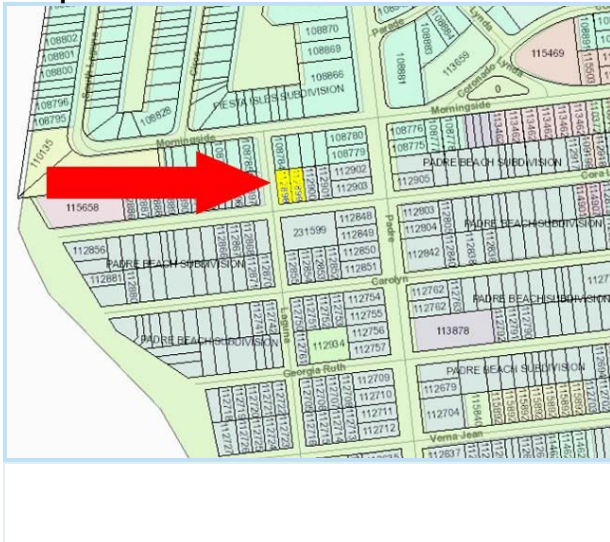
street view



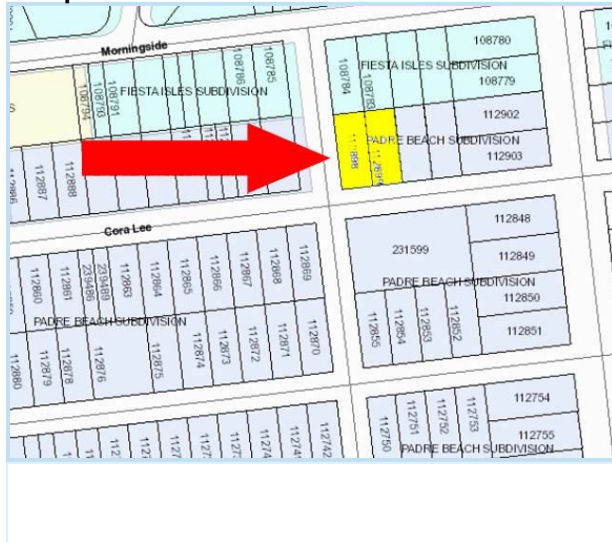
two adjacent corner lots



map view



map view



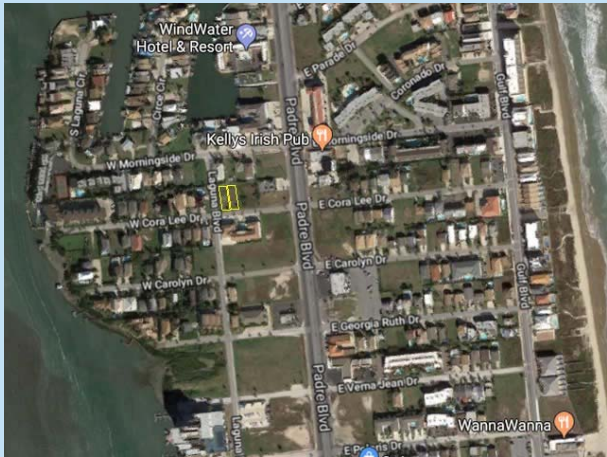
aerial view



aerial view



aerial view



street view



corner of W Cora Lee & Laguna

street view - corner of W Cora Lee & Laguna



view from Laguna Blvd.

street view



corner of W Cora Lee & Laguna

street view



view from W Cora Lee